



January 2023

WATER WHYS

The Latest from ECCV

Sustaining our community by providing safe, reliable water

In This Issue:

- 2023 Rates & Fees
- Ws of Your Water
- South Platte Snowpack
- Efficiency Savings



Efficiency Savings



Conserving water helps the whole community, and can provide immediate benefit to individual customers. Our Water Efficiency Specialist has worked with hundreds of customers to help them spot leaks, adjust sprinkler systems, and receive rebates for water saving appliances. These fairly simple adjustments can lead to consistent savings on monthly water bills.

ECCV is excited to once again offer several programs this coming spring that focus on outdoor water conservation. Last year 125 customers purchased and planted discounted Gardens In A Box. These water efficient gardens replaced an estimated 10,000 square feet of water-needy landscape with beautiful, low-water plantings. Gardens go on sale in March and tend to sell out quickly. Head to ResourceCentral.org/gardens/shop today to sign up for email reminders so you'll be the first to know when gardens are available.

Most ECCV customers can also use the free Eye on Water app to monitor their home water use and even be notified of potential leaks. Check out the various offers and resources at www.eccv.org/customer-conservation-center and email conservation@eccv.org for more information on programs or services that can help you save water.



Water & Sanitation District

303-693-3800
6201 S Gun Club Rd
Aurora, CO 80016
info@eccv.org



South Platte Snowpack

“We can sure use the snow.” You’ve probably heard that statement before in Colorado, and it’s usually always true. A huge portion of Coloradans, ECCV customers included, get much of their water from snowpack that melts into streams and rivers each year. The majority of ECCV’s water supply comes from the South Platte River basin.

Snow that piles up in Colorado’s northern Front Range becomes the water that feeds the South Platte. When mountain snow is in the forecast, take a look at the weather maps. If snow totals are high in the green shaded area (image below) that’s a good sign for the South Platte River. The western edge of the basin is largely formed by the continental divide. That means any snow that falls west of the Eisenhower Tunnel (or west of South Park if taking 285) ends up in a different basin.

The 98% in the image below indicates that snow-pack was at 98% of average as of mid-December, an encouraging sign. We’ll want to see that number hold steady throughout the winter (or even exceed 100%) to increase the chances of a healthy water supply for spring and summer.

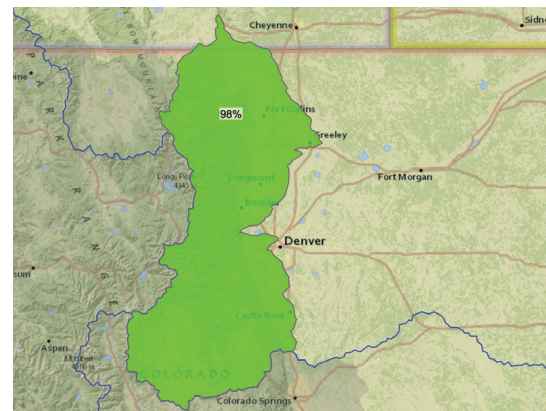


Image of a USDA map identifying the South Platte River basin and snowpack totals as of mid-December 2022.

The Ws of Your Water

Smoky Hill Road follows the general path of what was originally a wagon trail that was dubbed, “Starvation Trail.” If a settler coming west across the prairie ran out of supplies, the area’s lack of streams or rivers meant hunting game or gathering anything edible was unlikely.

Going from arid prairie to a community with a water supply supporting 60,000 people has involved hydrologists, attorneys, engineers, chemists, and a number of other professions. Together they shape the who, what, when, where, and why of your water supply. While water seems like a simple service, and one we all rely on, it continues to be a complex issue in Colorado and throughout the American West.

To help make sense of it all, ECCV has created the “Ws of Your Water.” Find an overview on our website at www.eccv.org in the Customer Resources section. Also, keep your eye out on the Nextdoor social media site where we’ll continue to share information about your water supply, and what goes into sustaining our community with reliable water service.



Get the quick details on your community water system at www.eccv.org in the Customer Resources section.

2023 Rates and Fees

The ECCV Board of Directors sets rates and fees each year to reflect the costs associated with capturing, treating, and delivering high quality water to our customers, as well as removing used water from homes via a sanitary sewer system. Rates and fees are reviewed as part of the District’s annual budgeting process which is scrutinized by staff and the Board of Directors over the course of several months. As costs increase over time, the Board of Directors has historically opted to increase fees in small increments to avoid the need for large increases year to year.

Water rates in 2023 will increase by about five percent across the various usage tiers. Usage amounts for each tier are also being slightly adjusted in 2023. During months where no outdoor watering is occurring, most customers will see an increase of \$0.50 or less per month in water charges. During months where outdoor watering is necessary, a home using 10,000 gallons of water per month will see an increase of \$1.75 in water fees compared to 2022.

WATER SERVICE RATES		
TIER	MONTHLY USAGE <i>(Gallons)</i>	2023 RATE <i>(per thousand gallons)</i>
1	0—5,000	\$4.60
2	6,000—18,000	\$6.80
3	19,000—28,000	\$9.90
4	29,000+	\$13.05
Comparison to 2022		
INDOOR USE MONTH <i>(5,000 gallons used)</i>		OUTDOOR USE MONTH <i>(10,000 gallons used)</i>
+\$0.50		+\$1.75

MONTHLY FLAT FEES		
2022	2023	PURPOSE
\$25.00	\$25.00	Sustainable Water Assurance Fee A fixed fee reflecting costs associated with developing, maintaining, and delivering a renewable water supply for ECCV customers.
\$38.75	\$40.95	Sewer Fee Pays for delivery and treatment of wastewater. Increase determined by costs assessed to ECCV by partners that receive, transport, and treat wastewater from ECCV’s system.
\$7.00	\$7.00	Administration Fee Covers the costs of meter maintenance and replacement, printing and mailing of monthly statements.